

48/160
DRAWING NUMBER

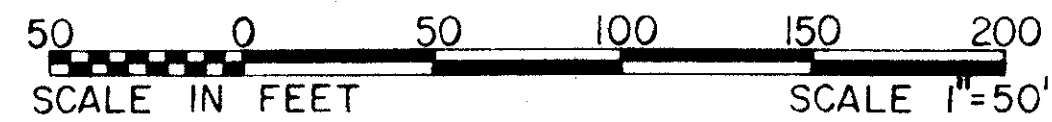
PARCEL A-4

SABAL LAKE PLAT 2 AT BOCA WEST - P. U. D.

BEING A REPLAT OF PART OF PARCEL A-4, SABAL LAKE OF BOCA WEST-P.U.D., RECORDED IN PLAT BOOK 43, PAGES 159 AND 160, PUBLIC RECORDS OF PALM BEACH COUNTY, FLORIDA

IN PART OF SECTION 9, TOWNSHIP 47 SOUTH, RANGE 42 EAST
PALM BEACH COUNTY, FLORIDA
IN 3 SHEETS SHEET NO. 3

GEE & JENSON
ENGINEERS - ARCHITECTS - PLANNERS, INC.
WEST PALM BEACH, FLORIDA
MAY 1984



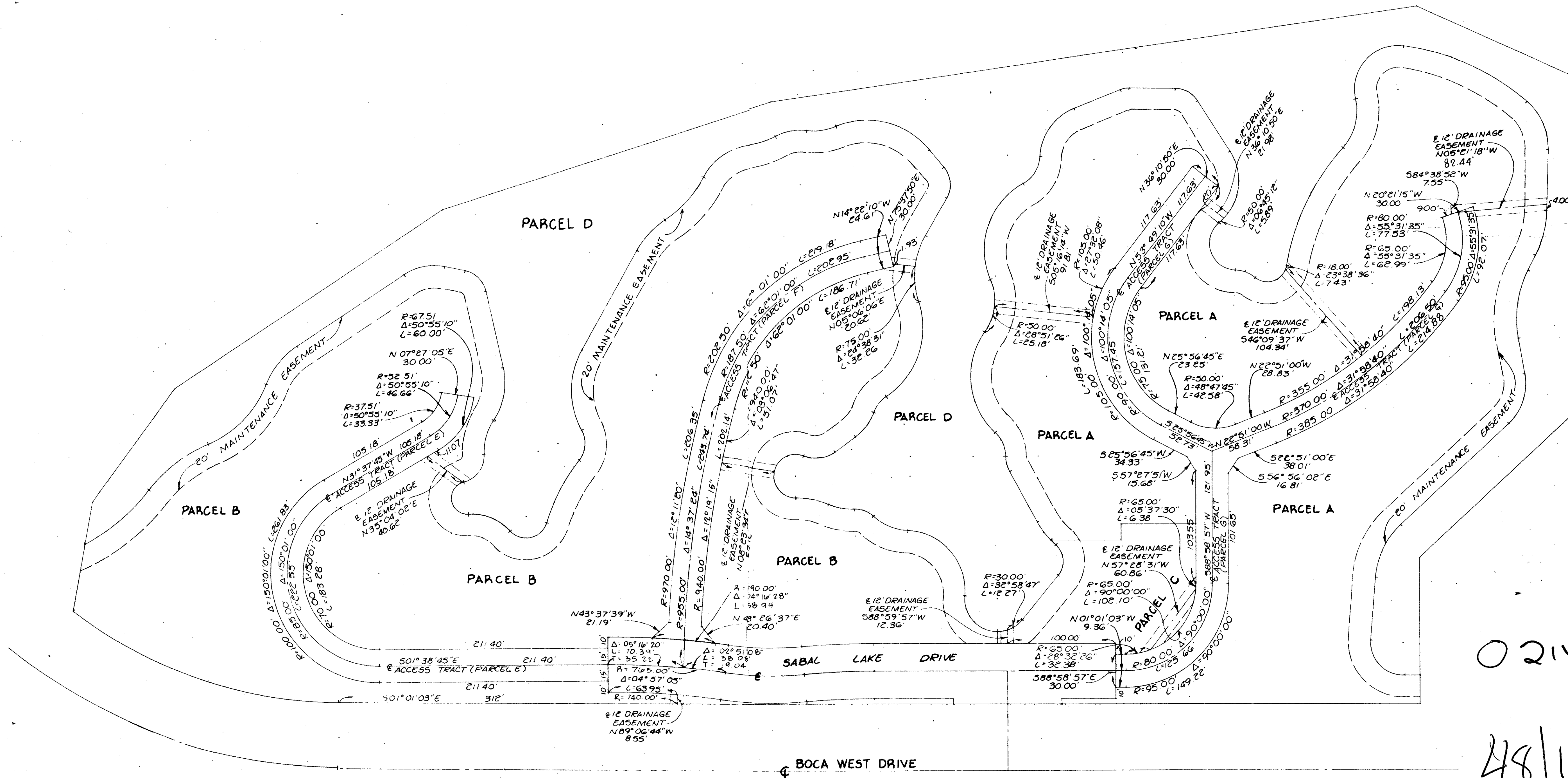
160

STATE OF FLORIDA
COUNTY OF PALM BEACH
This plat was filed for record at _____ M. this _____ day of _____ 1984, and duly recorded in Plat Book No. _____ on Page _____
JOHN B. DUNKLE
Clerk Circuit Court
By: _____ D.C.

DRAWING NUMBER

DRAWING NUMBER

DRAWING NUMBER



0214-311

48/160